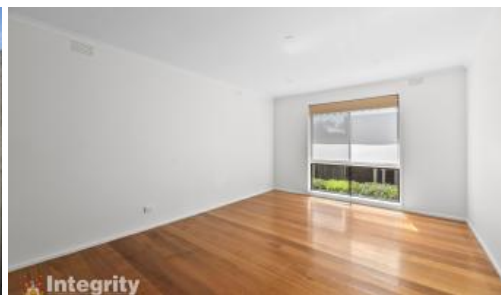


LEASED



55 Beresford Rd, Lilydale



## UNDER APPLICATION

Located walking distance to Lilydale train station, bars and eateries, the recreation reserve and Warburton Trail, this property offers you the opportunity to maximise the lifestyle available in Lilydale.

Providing 3 bedrooms, 1 bathroom, and 1 garage space and 1 secure car space, this home has everything you need for a comfortable lifestyle.

Features of this home include:

- large living and formal dining space
- covered entertaining area
- timber floors
- split system air conditioning

12 month lease available.

You must register to inspect. Register by clicking "Request a

3 1 2 432 m2

Price	\$500.00 per Week
Property Type	Rental
Property ID	257
Land Area	432 m2

### Agent Details

Narelle Johnson - 0448777262

### Office Details

Integrity Real Estate - Yarra Glen

SHOP 2 38-40 Bell St Yarra Glen, VIC, 3775 Australia  
0407 531 226

**Integrity**

Time” to view available inspection times.

The above information provided has been furnished to us by the vendor/s. We have not verified whether or not that information is accurate and do not have any belief in one way or the other in its accuracy. We do not accept any responsibility to any person for its accuracy and do no more than pass it on. All interested parties should make and rely upon their own inquiries in order to determine whether or not this information is in fact accurate.