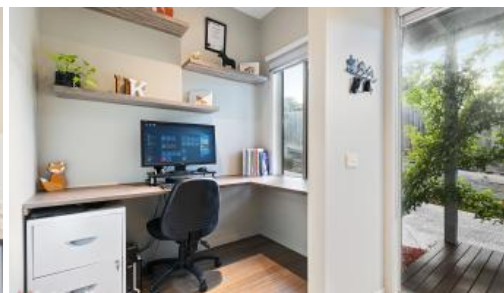


SOLD



2 Ruby Close, Healesville



## Location and Low Maintenance

Only a few years old this town house still has a modern and on trend feel. Design is practical with 3 bedrooms, a full ensuite along with a main bathroom, a large and spacious living area incorporating the lounge room, dining room and kitchen, a study nook plus internal access from the double remote-controlled garage.

With features including high ceilings, ducted heating, a reverse cycle split system, beautiful natural timber floor boards, near new carpets, neutral colour tones, plus a timber decking, leading from the living area, which has an electric awning for comfort when entertaining makes this a very easy and comfortable place to live in.

This low maintenance property, which is located within just a few minutes' walk to the east end of town and a short stroll to the main street of Healesville and all its amenities that it offers will suit an astute buyer looking for quality and practicability.

The above information provided has been furnished to us by the vendor/s. We have not verified whether or not that information is accurate and do not have any belief in one way or the other in its accuracy. We do not accept any responsibility to any person for its accuracy and do no more than

🛏 3 🚿 2 🚿 2 📏 235 m<sup>2</sup>

**Price** SOLD for  
\$650,000

**Property Type** Residential

**Property ID** 40

**Land Area** 235 m<sup>2</sup>

### Agent Details

Jane Nunn - 0432 375 940

### Office Details

Integrity Real Estate - Yarra Glen

SHOP 2 38-40 Bell St Yarra Glen, VIC, 3775 Australia  
03 9730 2333

**Integrity**

pass it on. All interested parties should make and rely upon their own inquiries in order to determine whether or not this information is in fact accurate.