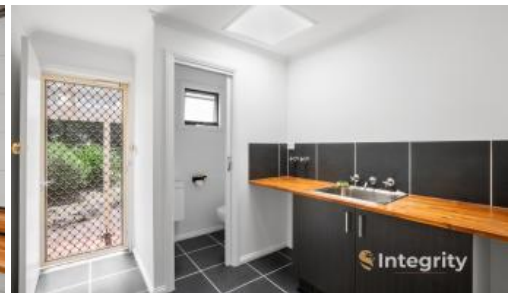


SOLD



341 Kinglake-Glenburn Road, Kinglake

Integrity



The Perfect First Home on Over Half An Acre

This delightful brick veneer home situated on 2430m2 with a fully fenced yard is a great first home or investment. Recently updated this home is set with a large yard, scenic outlook, and in a quiet area.

Step inside, and you'll be greeted by a warm and inviting atmosphere. Consisting of 3 bedrooms, 1 bathroom, 2 toilets including powder room, timber kitchen/meals area, lounge room, and large laundry with storage. The kitchen is fitted with updated appliances provides an excellent space where culinary delights are crafted with ease.

Some of the many features include built in robes to all bedrooms, wood heating with ducted inline fan system, timber floors and new carpets. The thoughtful design of the house includes concrete stumps, providing stability and a solid foundation for years to come. There is also an undercover front and rear

🏠 3 🛏️ 1 🚿 2 📏 2,430 m2

Price SOLD for \$711,000
Property Type Residential
Property ID 412
Land Area 2,430 m2

Agent Details

William Verhagen - 0437 371 969

Office Details

Integrity Real Estate - Yarra Glen

SHOP 2 38-40 Bell St Yarra Glen, VIC, 3775 Australia
03 9730 2333

verandah to enjoy the beautifully manicured landscape gardens.

Integrity

Yarra Valley & Kinglake Ranges

Venturing outside, you'll find yourself immersed in the beauty of over half-acre of land, offering ample space for various outdoor activities. A double tandem carport provides shelter for vehicles, adding a practical touch to the property, as well as a perfect spot for additional storage at the rear. Additional storage includes the garden shed to the side of the property.

Experience the epitome of rural living, where the harmony between nature and home creates an unparalleled lifestyle. This property in Kinglake is not just a house; it's an invitation to embrace the simplicity and beauty of country life. Don't miss the chance to make this idyllic retreat your own, where the charm of the rural landscape becomes a part of your everyday life.

The above information provided has been furnished to us by the vendor/s. We have not verified whether or not that information is accurate and do not have any belief in one way or the other in its accuracy. We do not accept any responsibility to any person for its accuracy and do no more than pass it on. All interested parties should make and rely upon their own inquiries in order to determine whether or not this information is in fact accurate.